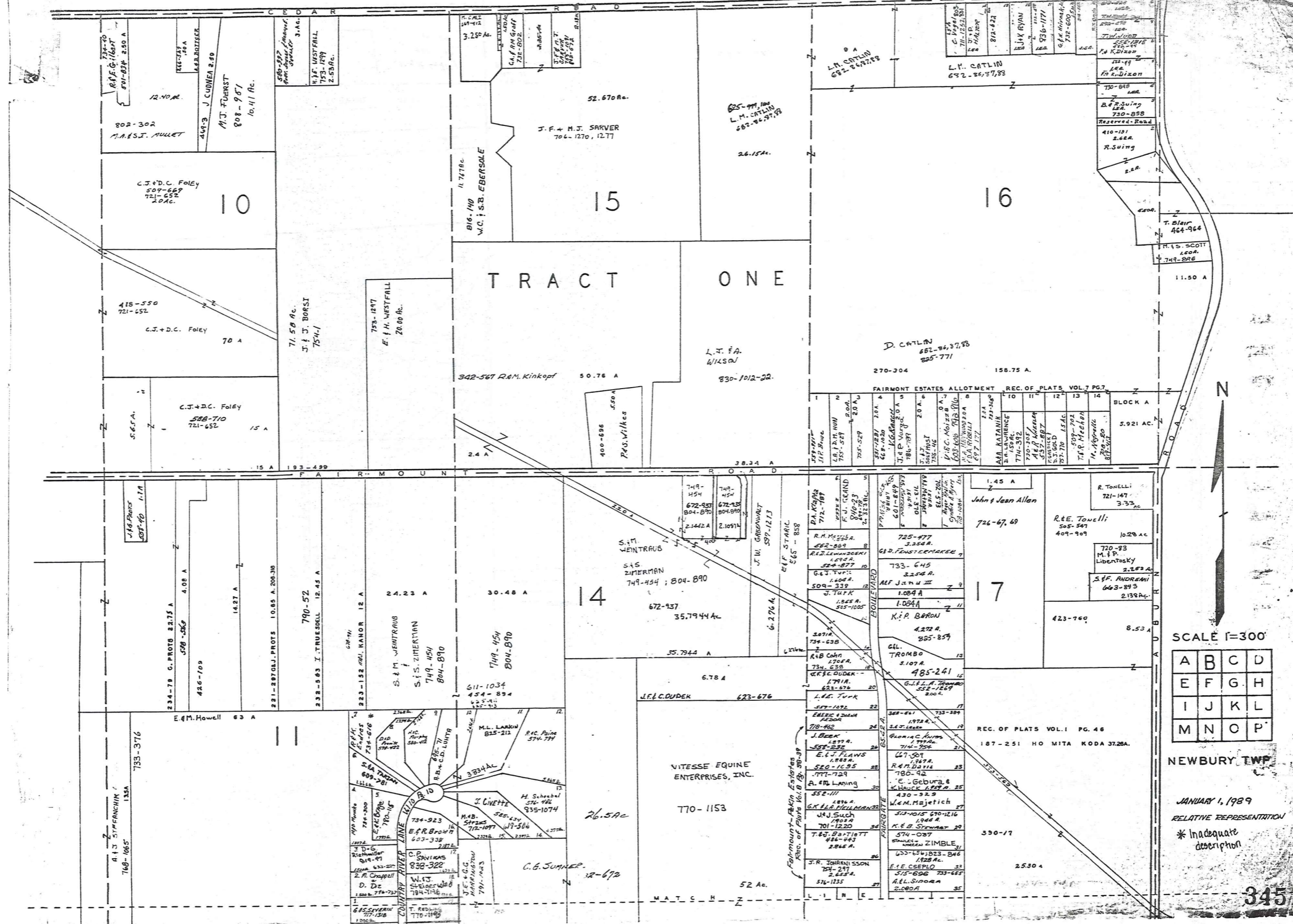


MUNSON TOWNSHIP

Auburn-Cedar Estates Vol. 7 Pg. 2



SCALE 1"=300'

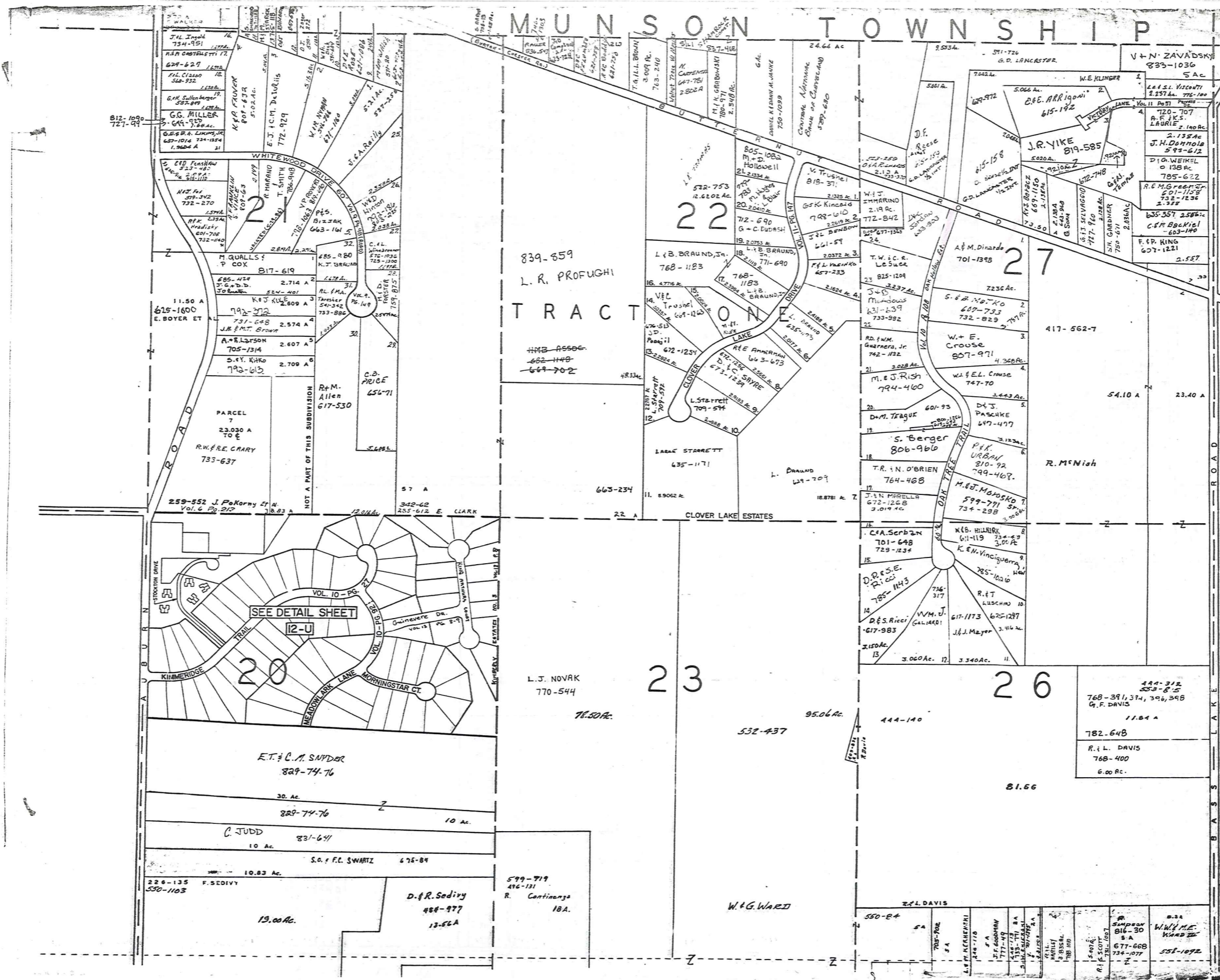
A	B	C	D
E	F	G	H
I	J	K	L
M	N	O	P

NEWBURY TWP

JANUARY 1, 1989
RELATIVE REPRESENTATION
* Inadequate description

MUNSON TOWNSHIP

346



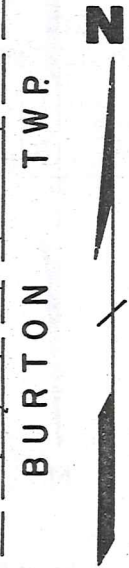
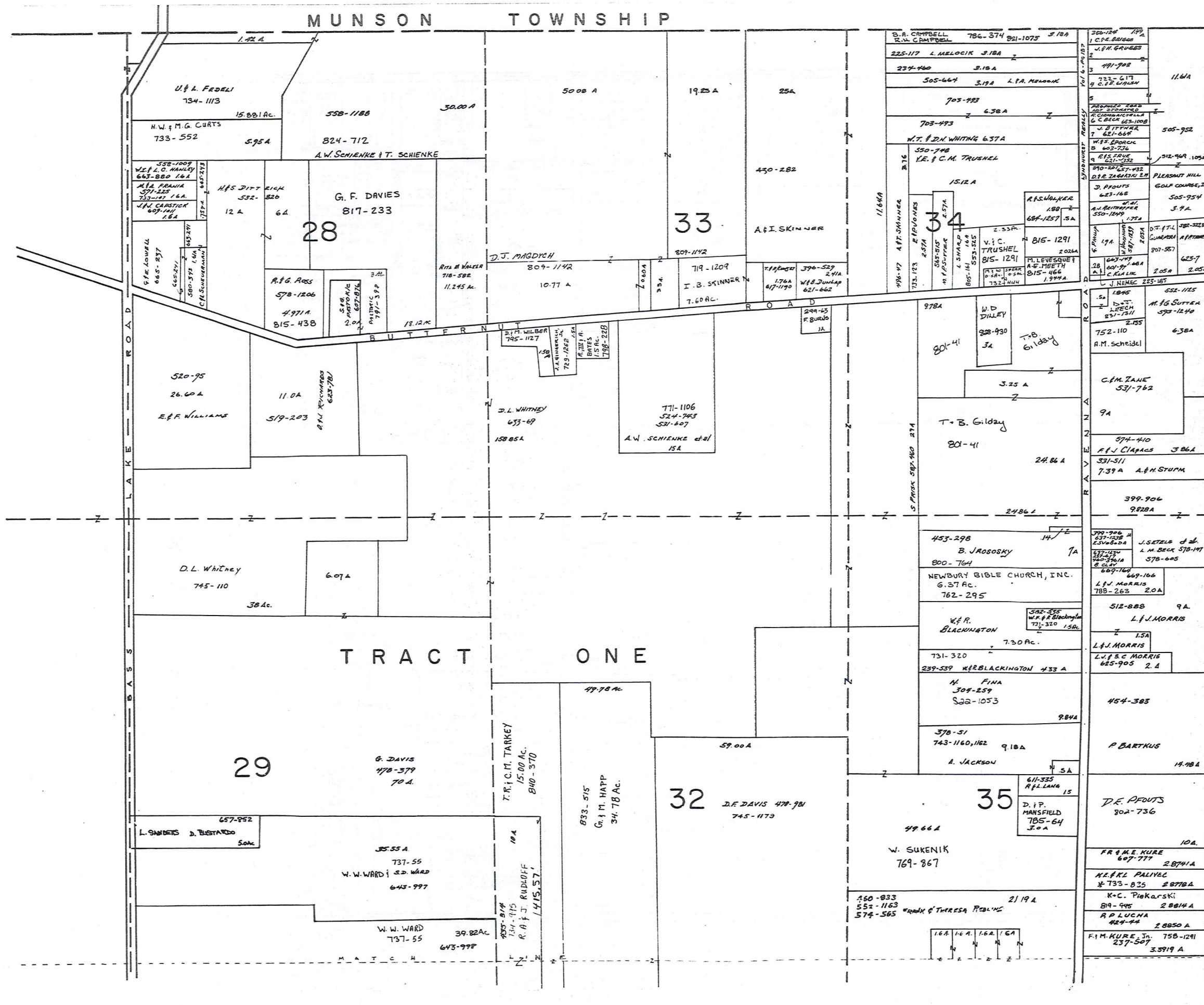
A	B	C	D
E	F	G	H
I	J	K	L
M	N	O	P

NEWBURY TWP
 JAN. 1, 1989
 RELATIVE REPRESENTATION

* Inadequate description

MUNSON TOWNSHIP

CLARIDON TWP

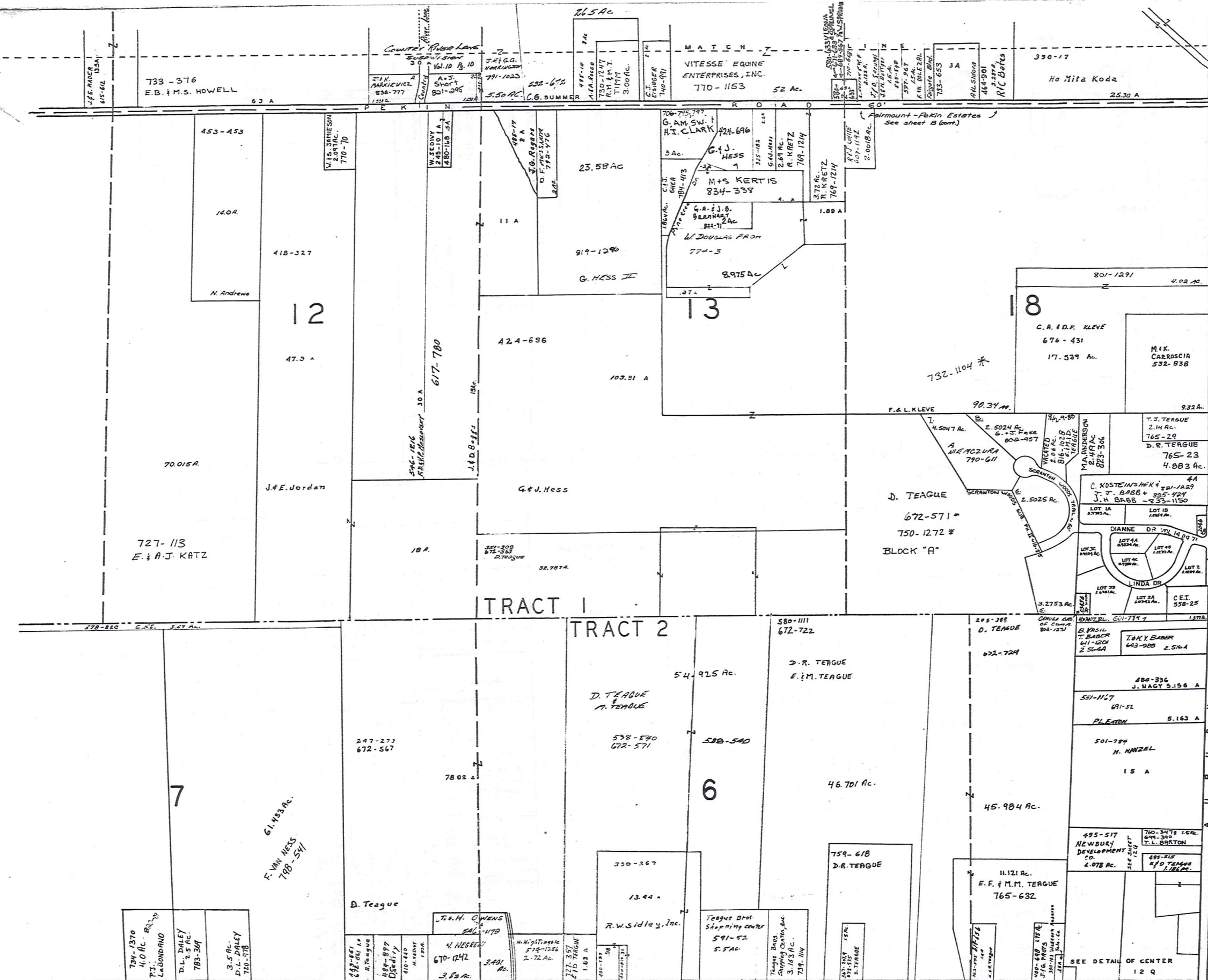


SCALE 1"=300'

A	B	C	D
E	F	G	H
I	J	K	L
M	N	O	P

NEWBURY TWP
JAN 1, 1989

RELATIVE REPRESENTATION
* Inadequate description

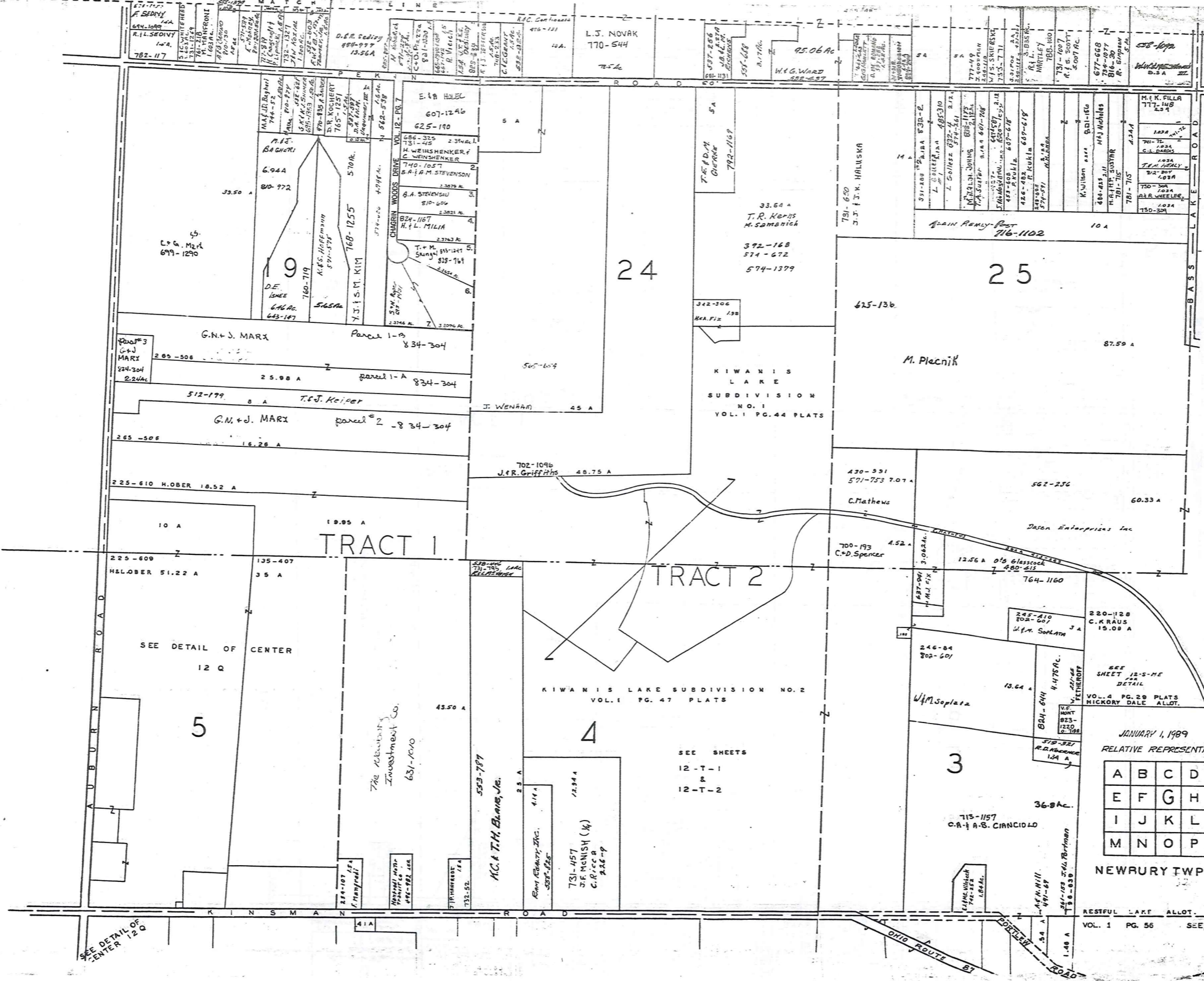


RELATIVE REPRESENTATION

5 JANUARY 4, 1989
SCALE 1" = 300'

A	B	C	D
E	F	G	H
I	J	K	L
M	N	O	P

NEWBURY TWP



JANUARY 1, 1989
RELATIVE REPRESENTATION

A	B	C	D
E	F	G	H
I	J	K	L
M	N	O	P

* Inadequate description

NEWBURY TWP

RESTFUL LAKE ALLOT.
VOL. 1 PG. 56 SEE SHEET 12-S

SEE DETAIL OF CENTER 12 Q

SEE DETAIL OF CENTER 12 Q

SEE SHEETS
12-T-1
2
12-T-2

KIWANIS LAKE SUBDIVISION NO. 2
VOL. 1 PG. 47 PLATS

KIWANIS LAKE SUBDIVISION NO. 1
VOL. 1 PG. 44 PLATS

TRACT 1

TRACT 2

AUBURN ROAD

BASS LAKE ROAD

OHIO ROUTE 87

PORTER ROAD

OHIO ST

BURTON TOWNSHIP

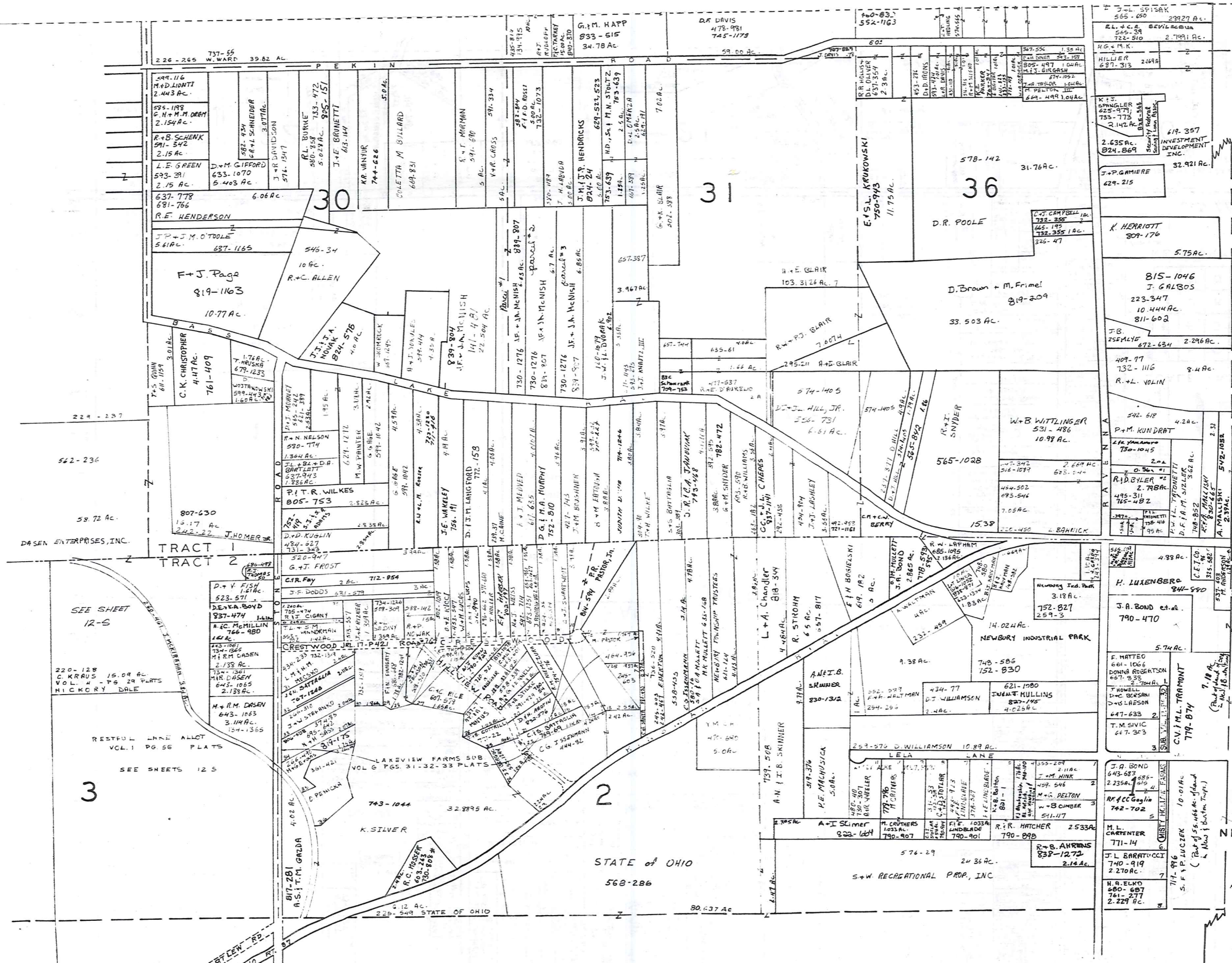
SCALE 1"=300'

A	B	C	D
E	F	G	H
I	J	K	L
M	N	O	P

NEWBURY TWP.

JAN 1, 1929
RELATIVE REPRESENTATION

*Inadequate description



DASEN ENTERPRISES, INC.

SEE SHEET 12-5

220-128 C. KRAS 15.09 AC VOL. 4 - PG 29 PLATS HICKORY DALE

RESTFUL LAKE ALLOT VOL. 1 PG 56 PLATS

SEE SHEETS 12 5

3

STATE OF OHIO
568-286

S+W RECREATIONAL PROP, INC

J. A. BOND 643-683 2.11 AC
2.235 AC
M. S. BELTON
W. B. CUMBER
541-117

R. F. C. GAGLIN 742-702

M. L. GARRETT 771-14

J. L. BARATTOCCI 740-919 2.270 AC

H. A. ELMO 680-697 761-277 2.224 AC

S. F. P. LUCZAK 10-01 AC (Part of 55.466 AC of land (New & Burton Twp.))

M. L. GARRETT 771-14

J. A. BOND 643-683 2.11 AC
2.235 AC
M. S. BELTON
W. B. CUMBER
541-117

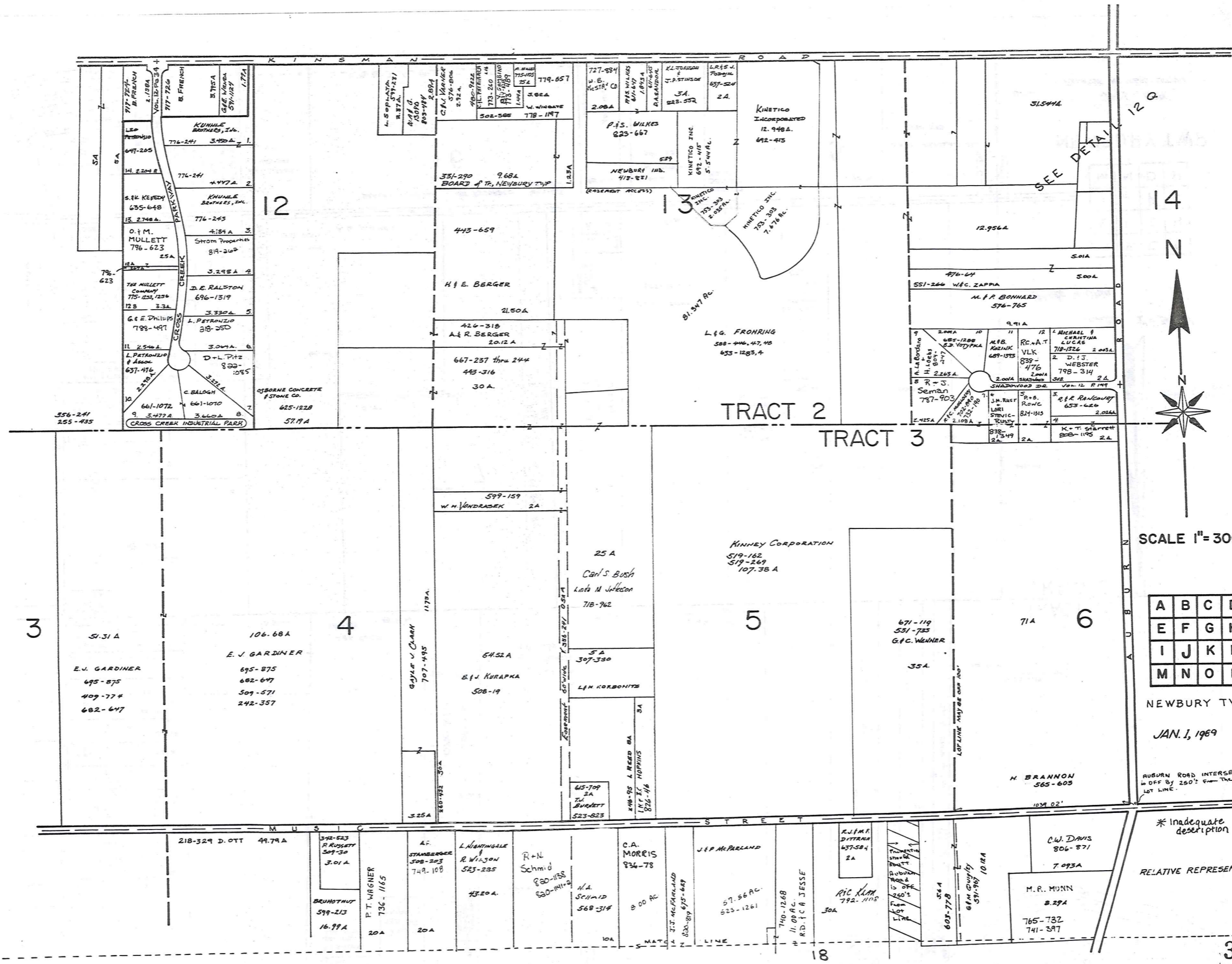
R. F. C. GAGLIN 742-702

M. L. GARRETT 771-14

J. L. BARATTOCCI 740-919 2.270 AC

H. A. ELMO 680-697 761-277 2.224 AC

S. F. P. LUCZAK 10-01 AC (Part of 55.466 AC of land (New & Burton Twp.))



SCALE 1" = 300'

A	B	C	D
E	F	G	H
I	J	K	L
M	N	O	P

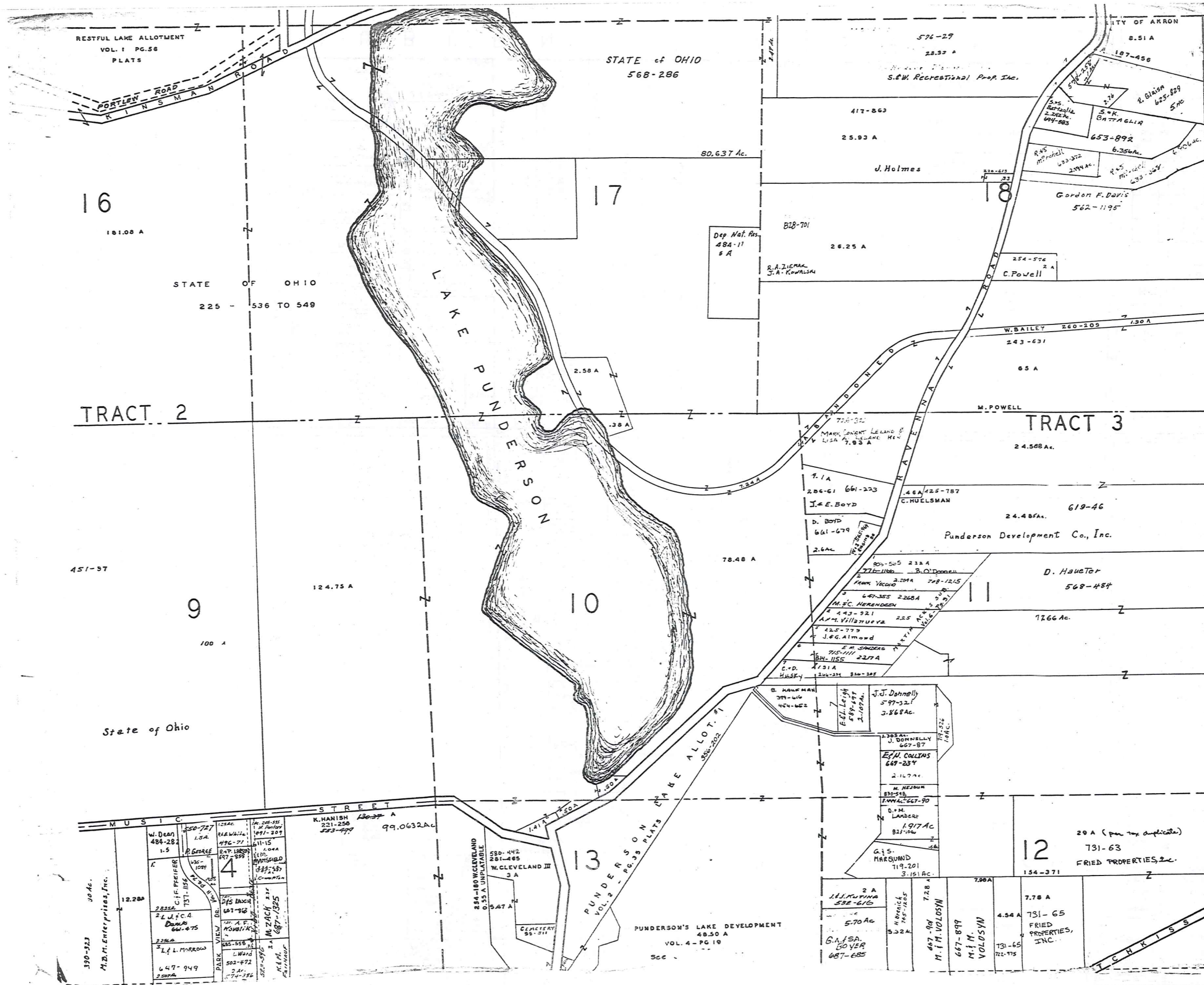
NEWBURY TWP.

JAN. 1, 1969

AUBURN ROAD INTERSECTION
is OFF BY 250' FROM THE
LOT LINE.

* Inadequate description

RELATIVE REPRESENTATION



BURTON TWP.
 NEWBURY TWP.



SCALE 1" = 300'

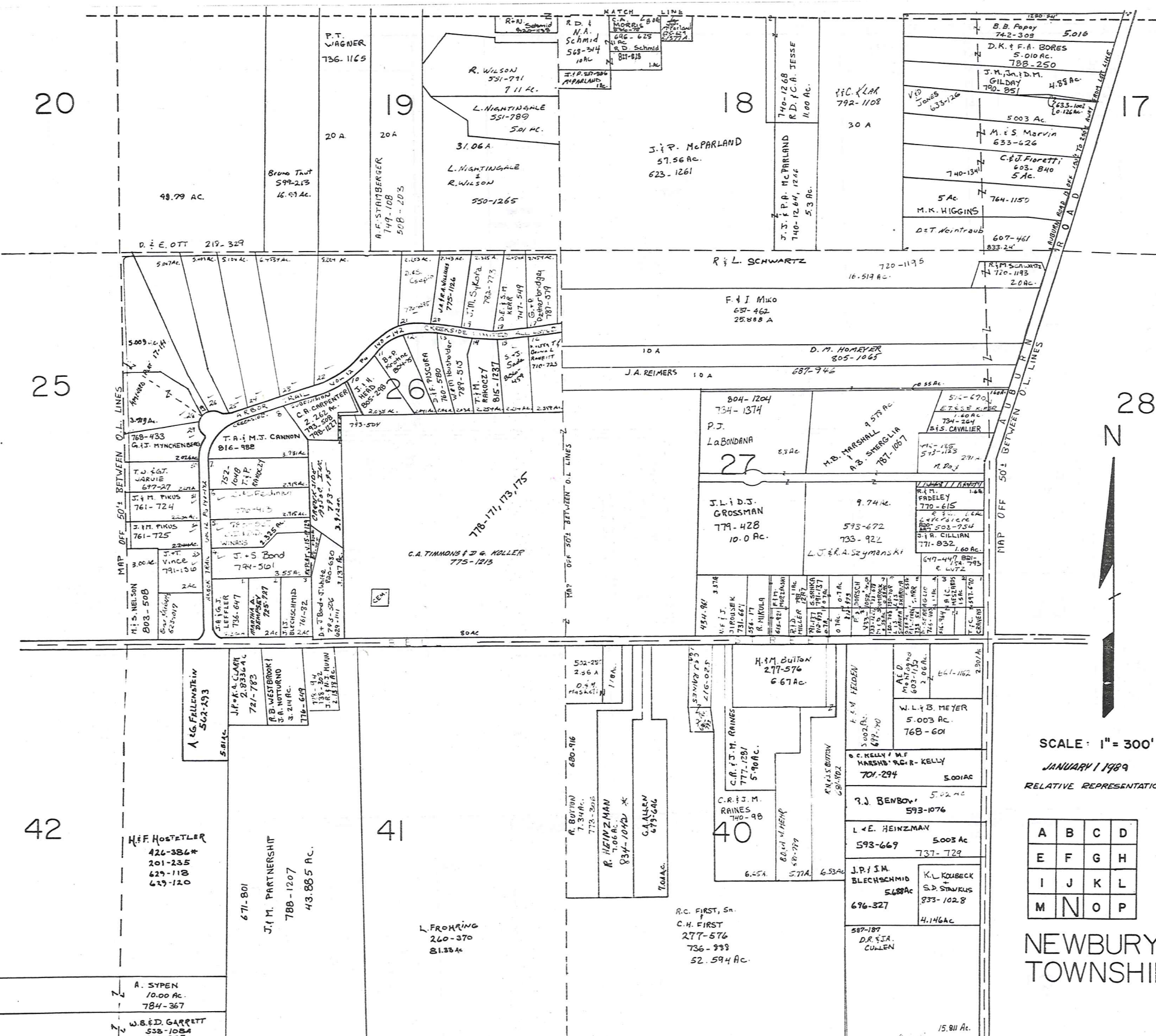
RELATIVE REPRESENTATION

A	B	C	D
E	F	G	H
I	J	K	L
M	N	O	P

NEWBURY TWP.

JAN. 1, 1969

*Inadequate description



TRACT THREE

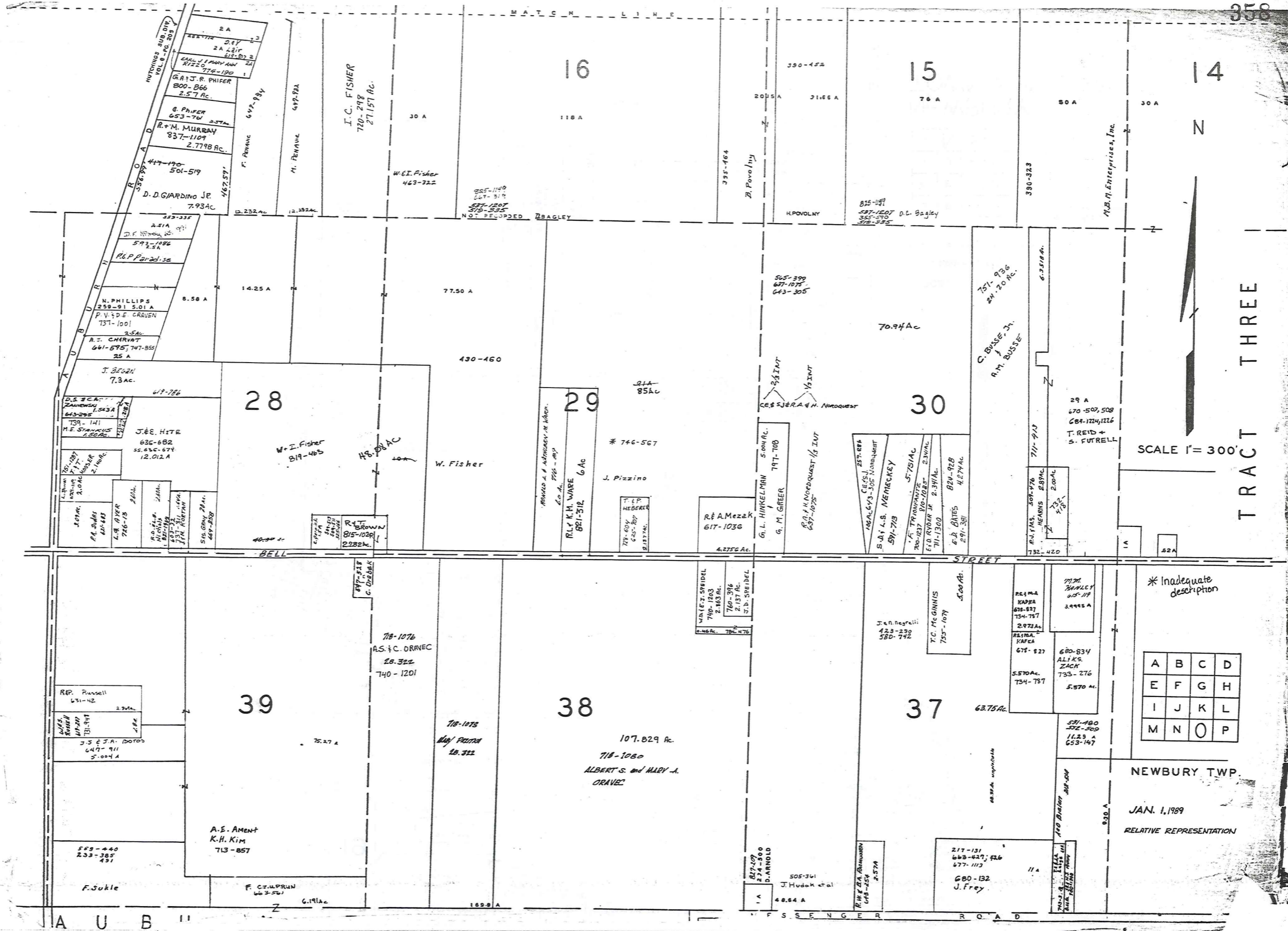


SCALE: 1" = 300'
 JANUARY 1 1989
 RELATIVE REPRESENTATION

A	B	C	D
E	F	G	H
I	J	K	L
M	N	O	P

* Inadequate description

NEWBURY TOWNSHIP



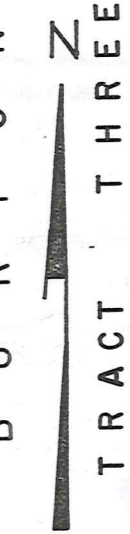
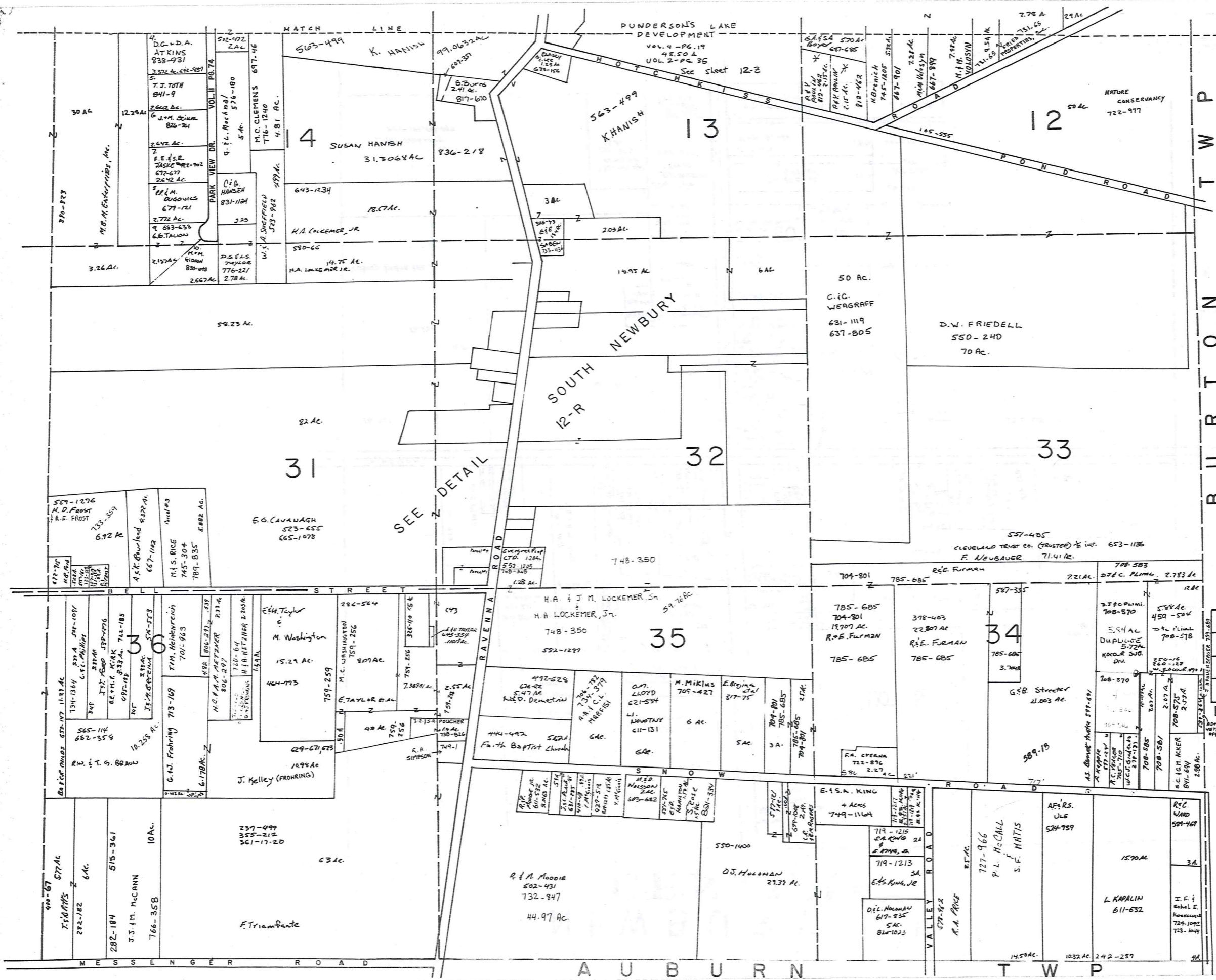
SCALE 1" = 300'

TRACT THREE

* Inadequate description

A	B	C	D
E	F	G	H
I	J	K	L
M	N	O	P

NEWBURY TWP.
 JAN. 1, 1989
 RELATIVE REPRESENTATION



SCALE: 1"=300'

A	B	C	D
E	F	G	H
I	J	K	L
M	N	O	P

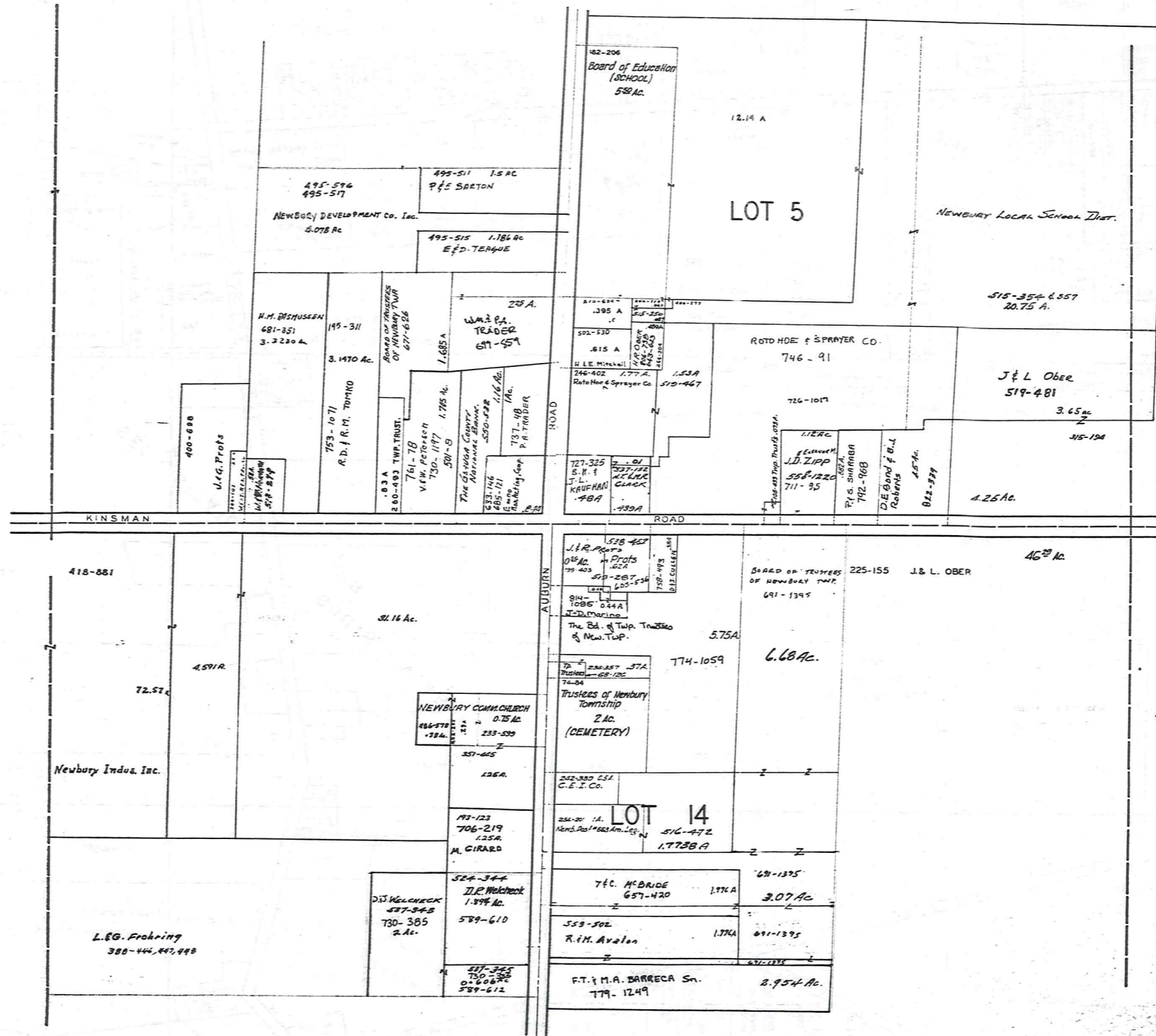
NEWBURY TWP

JAN. 1, 1989

RELATIVE REPRESENTATION

* Inadequate description

NEWBURY T.P. CENTER



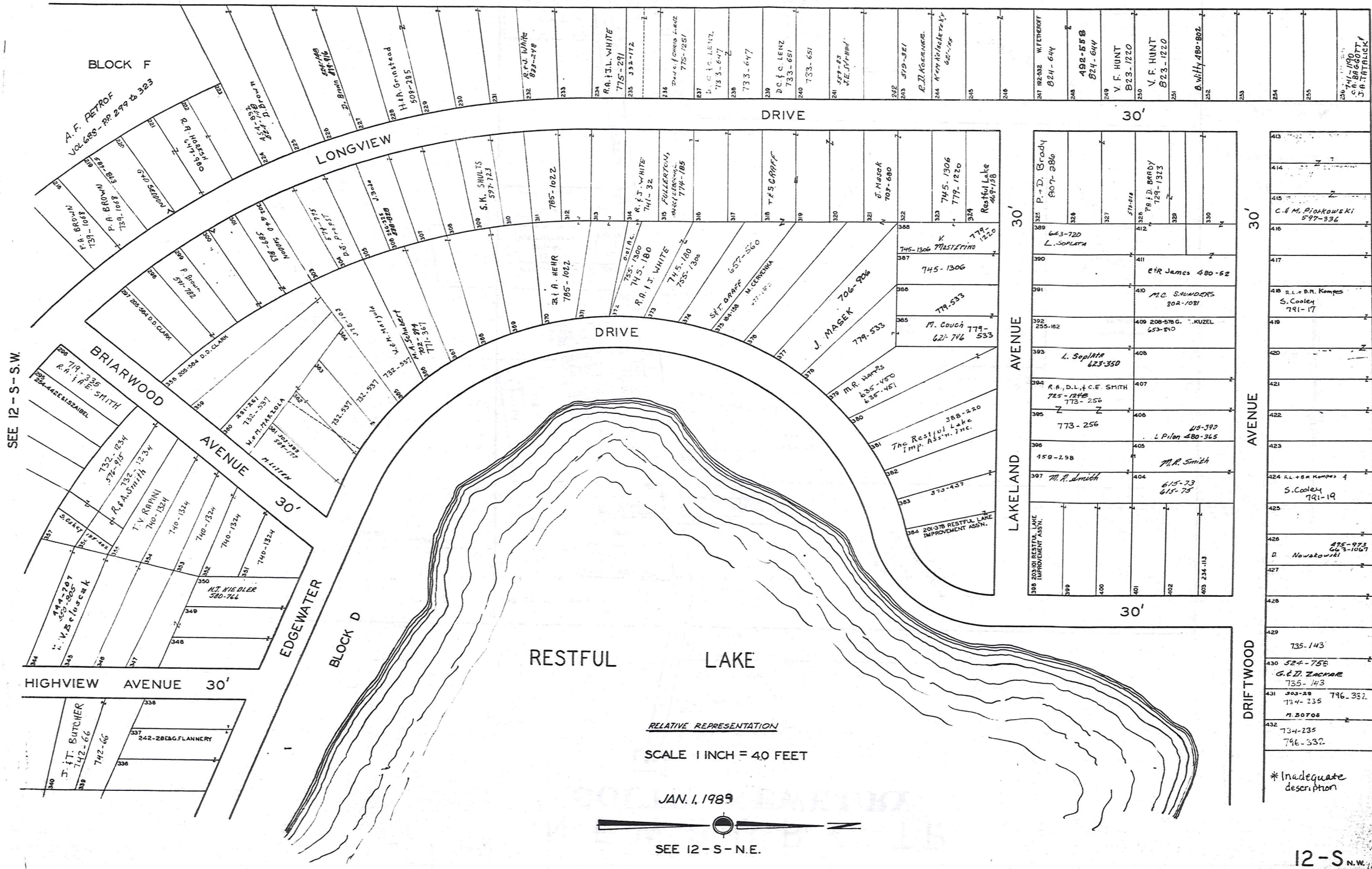
SCALE 1"=25CH=165FT.

JAN 1, 1989
RELATIVE REPRESENTATION

* Inadequate description

THE RELIANCE INVESTMENT CO'S
RESTFUL LAKE ALLOTMENT

BEING PART OF ORIGINAL LOTS NOS. 3 & 16 OF TRACT 2 NEWBURY TOWNSHIP
VOL. 1 PAGES 56 & 57 REC. OF PLATS



BLOCK F

A. F. PETROF
VOL. 685 - Pgs 279 & 323

BRIARWOOD AVENUE

HIGHVIEW AVENUE 30'

EDGEWATER AVENUE 30'

LONGVIEW DRIVE

DRIVE

DRIVE

RESTFUL LAKE

LAKELAND AVENUE 30'

DRIFTWOOD AVENUE 30'

30'

30'

30'

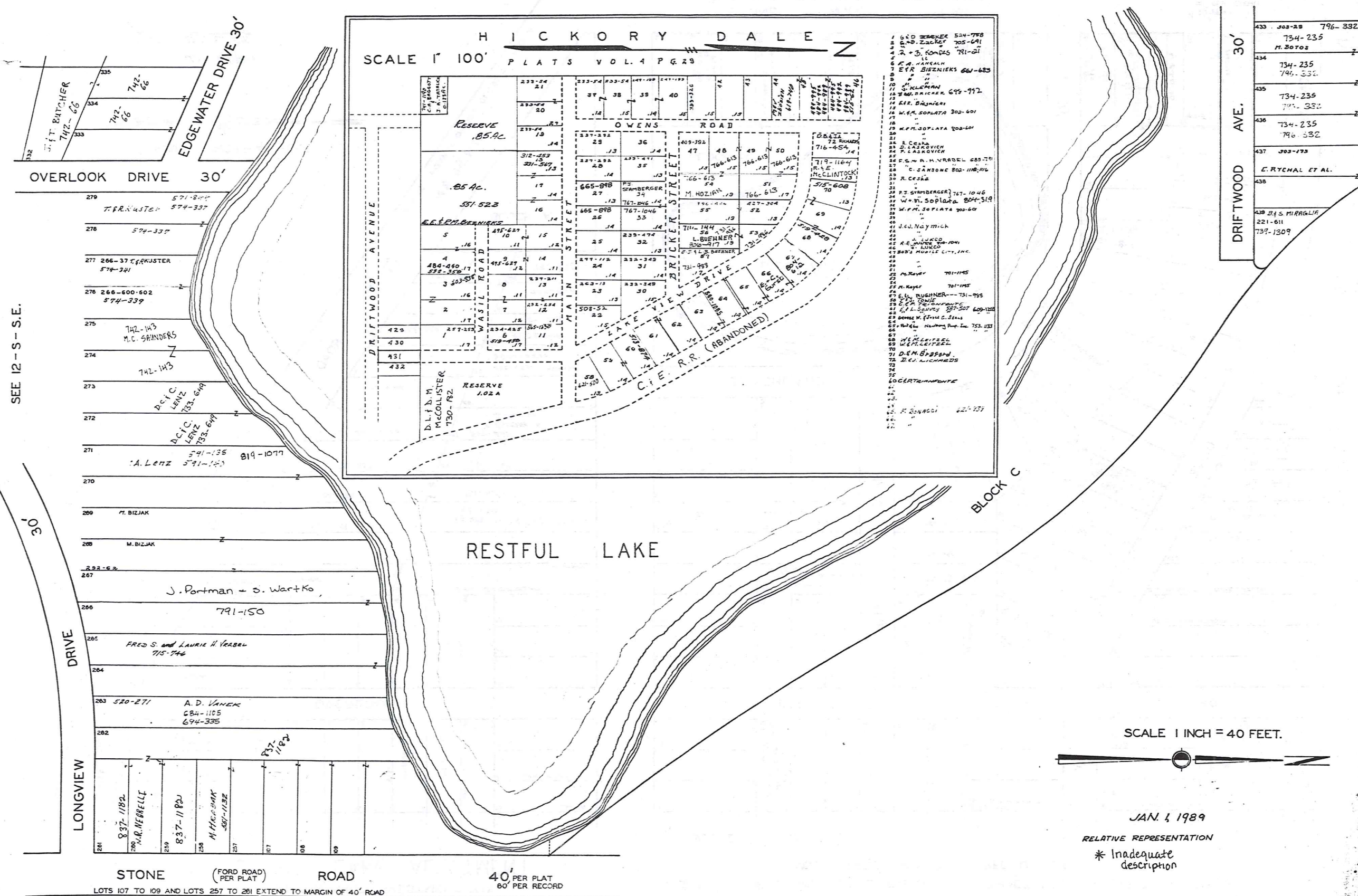
30'

30'

12-S-N-E

THE RELIANCE INVESTMENT CO'S
RESTFUL LAKE ALLOTMENT

BEING PART OF ORIGINAL LOTS NOS. 3 & 16 OF TRACT 2 NEWBURY TOWNSHIP
SEE 12 - S NW VOL. 1 PAGES 56 & 57 REC. OF PLATS



SEE 12 - S - S.E.

SCALE 1 INCH = 40 FEET.



JAN. 1, 1989
RELATIVE REPRESENTATION
* Inadequate description

STONE ROAD (FORD ROAD) PER PLAT
LOTS 107 TO 109 AND LOTS 257 TO 261 EXTEND TO MARGIN OF 40' ROAD
40' PER PLAT
60' PER RECORD

332	333	334	335
742-66	742-66	742-66	742-66
336	337	338	339
742-66	742-66	742-66	742-66
340	341	342	343
742-66	742-66	742-66	742-66
344	345	346	347
742-66	742-66	742-66	742-66
348	349	350	351
742-66	742-66	742-66	742-66
352	353	354	355
742-66	742-66	742-66	742-66
356	357	358	359
742-66	742-66	742-66	742-66
360	361	362	363
742-66	742-66	742-66	742-66
364	365	366	367
742-66	742-66	742-66	742-66
368	369	370	371
742-66	742-66	742-66	742-66
372	373	374	375
742-66	742-66	742-66	742-66
376	377	378	379
742-66	742-66	742-66	742-66
380	381	382	383
742-66	742-66	742-66	742-66
384	385	386	387
742-66	742-66	742-66	742-66
388	389	390	391
742-66	742-66	742-66	742-66
392	393	394	395
742-66	742-66	742-66	742-66
396	397	398	399
742-66	742-66	742-66	742-66
400	401	402	403
742-66	742-66	742-66	742-66
404	405	406	407
742-66	742-66	742-66	742-66
408	409	410	411
742-66	742-66	742-66	742-66
412	413	414	415
742-66	742-66	742-66	742-66
416	417	418	419
742-66	742-66	742-66	742-66
420	421	422	423
742-66	742-66	742-66	742-66
424	425	426	427
742-66	742-66	742-66	742-66
428	429	430	431
742-66	742-66	742-66	742-66
432	433	434	435
742-66	742-66	742-66	742-66
436	437	438	439
742-66	742-66	742-66	742-66
440	441	442	443
742-66	742-66	742-66	742-66
444	445	446	447
742-66	742-66	742-66	742-66
448	449	450	451
742-66	742-66	742-66	742-66
452	453	454	455
742-66	742-66	742-66	742-66
456	457	458	459
742-66	742-66	742-66	742-66
460	461	462	463
742-66	742-66	742-66	742-66
464	465	466	467
742-66	742-66	742-66	742-66
468	469	470	471
742-66	742-66	742-66	742-66
472	473	474	475
742-66	742-66	742-66	742-66
476	477	478	479
742-66	742-66	742-66	742-66
480	481	482	483
742-66	742-66	742-66	742-66
484	485	486	487
742-66	742-66	742-66	742-66
488	489	490	491
742-66	742-66	742-66	742-66
492	493	494	495
742-66	742-66	742-66	742-66
496	497	498	499
742-66	742-66	742-66	742-66
500	501	502	503
742-66	742-66	742-66	742-66
504	505	506	507
742-66	742-66	742-66	742-66
508	509	510	511
742-66	742-66	742-66	742-66
512	513	514	515
742-66	742-66	742-66	742-66
516	517	518	519
742-66	742-66	742-66	742-66
520	521	522	523
742-66	742-66	742-66	742-66
524	525	526	527
742-66	742-66	742-66	742-66
528	529	530	531
742-66	742-66	742-66	742-66
532	533	534	535
742-66	742-66	742-66	742-66
536	537	538	539
742-66	742-66	742-66	742-66
540	541	542	543
742-66	742-66	742-66	742-66
544	545	546	547
742-66	742-66	742-66	742-66
548	549	550	551
742-66	742-66	742-66	742-66
552	553	554	555
742-66	742-66	742-66	742-66
556	557	558	559
742-66	742-66	742-66	742-66
560	561	562	563
742-66	742-66	742-66	742-66
564	565	566	567
742-66	742-66	742-66	742-66
568	569	570	571
742-66	742-66	742-66	742-66
572	573	574	575
742-66	742-66	742-66	742-66
576	577	578	579
742-66	742-66	742-66	742-66
580	581	582	583
742-66	742-66	742-66	742-66
584	585	586	587
742-66	742-66	742-66	742-66
588	589	590	591
742-66	742-66	742-66	742-66
592	593	594	595
742-66	742-66	742-66	742-66
596	597	598	599
742-66	742-66	742-66	742-66
600	601	602	603
742-66	742-66	742-66	742-66
604	605	606	607
742-66	742-66	742-66	742-66
608	609	610	611
742-66	742-66	742-66	742-66
612	613	614	615
742-66	742-66	742-66	742-66
616	617	618	619
742-66	742-66	742-66	742-66
620	621	622	623
742-66	742-66	742-66	742-66
624	625	626	627
742-66	742-66	742-66	742-66
628	629	630	631
742-66	742-66	742-66	742-66
632	633	634	635
742-66	742-66	742-66	742-66
636	637	638	639
742-66	742-66	742-66	742-66
640	641	642	643
742-66	742-66	742-66	742-66
644	645	646	647
742-66	742-66	742-66	742-66
648	649	650	651
742-66	742-66	742-66	742-66
652	653	654	655
742-66	742-66	742-66	742-66
656	657	658	659
742-66	742-66	742-66	742-66
660	661	662	663
742-66	742-66	742-66	742-66
664	665	666	667
742-66	742-66	742-66	742-66
668	669	670	671
742-66	742-66	742-66	742-66
672	673	674	675
742-66	742-66	742-66	742-66
676	677	678	679
742-66	742-66	742-66	742-66
680	681	682	683
742-66	742-66	742-66	742-66
684	685	686	687
742-66	742-66	742-66	742-66
688	689	690	691
742-66	742-66	742-66	742-66
692	693	694	695
742-66	742-66	742-66	742-66
696	697	698	699
742-66	742-66	742-66	742-66
700	701	702	703
742-66	742-66	742-66	742-66
704	705	706	707
742-66	742-66	742-66	742-66
708	709	710	711
742-66	742-66	742-66	742-66
712	713	714	715
742-66	742-66	742-66	742-66
716	717	718	719
742-66	742-66	742-66	742-66
720	721	722	723
742-66	742-66	742-66	742-66
724	725	726	727
742-66	742-66	742-66	742-66
728	729	730	731
742-66	742-66	742-66	742-66
732	733	734	735
742-66	742-66	742-66	742-66
736	737	738	739
742-66	742-66	742-66	742-66
740	741	742	743
742-66	742-66	742-66	742-66
744	745	746	747
742-66	742-66	742-66	742-66
748	749	750	751
742-66	742-66	742-66	742-66
752	753	754	755
742-66	742-66	742-66	742-66
756	757	758	759
742-66	742-66	742-66	742-66
760	761	762	763
742-66	742-66	742-66	742-66
764	765	766	767
742-66	742-66	742-66	742-66
768	769	770	771
742-66	742-66	742-66	742-66
772	773	774	775
742-66	742-66	742-66	742-66
776	777	778	779
742-66	742-66	742-66	742-66
780	781	782	783
742-66	742-66	742-66	742-66
784	785	786	787
742-66	742-66	742-66	742-66
788	789	790	791
742-66	742-66	742-66	742-66
792	793	794	795
742-66	742-66	742-66	742-66
796	797	798	799
742-66	742-66	742-66	742-66
800	801	802	803
742-66	742-66	742-66	742-66
804	805	806	807

THE RELIANCE INVESTMENT CO'S
RESTFUL LAKE ALLOTMENT

BEING PART OF ORIGINAL LOTS NOS. 3 & 16 OF TRACT 2 NEWBURY TOWNSHIP
VOL. 1 PAGES 56 & 57 REC. OF PLATS

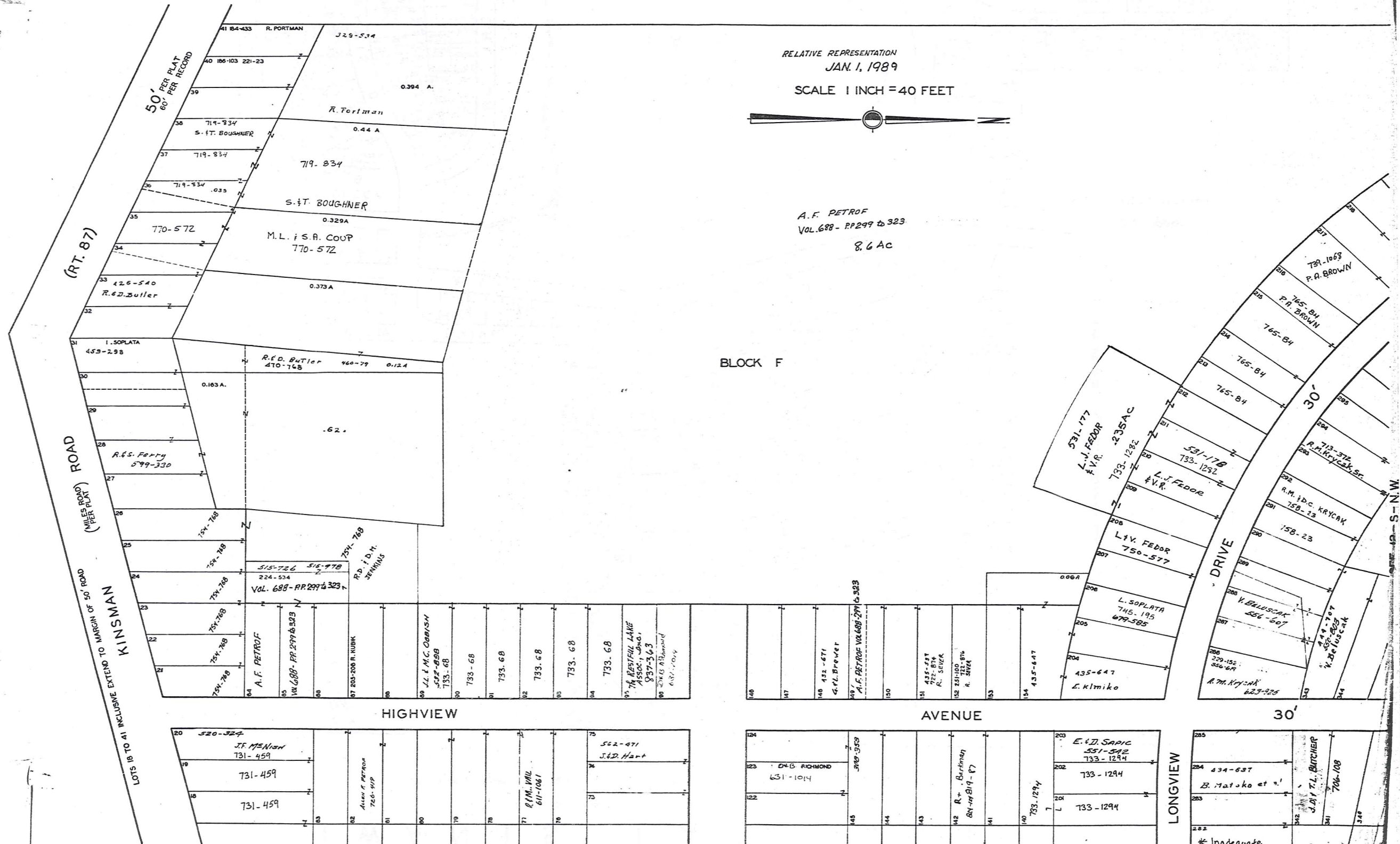
RELATIVE REPRESENTATION
JAN. 1, 1989

SCALE 1 INCH = 40 FEET



A.F. PETROF
VOL. 688 - PP 299 to 323
8.6 AC

BLOCK F



SEE 12-S-S.E.

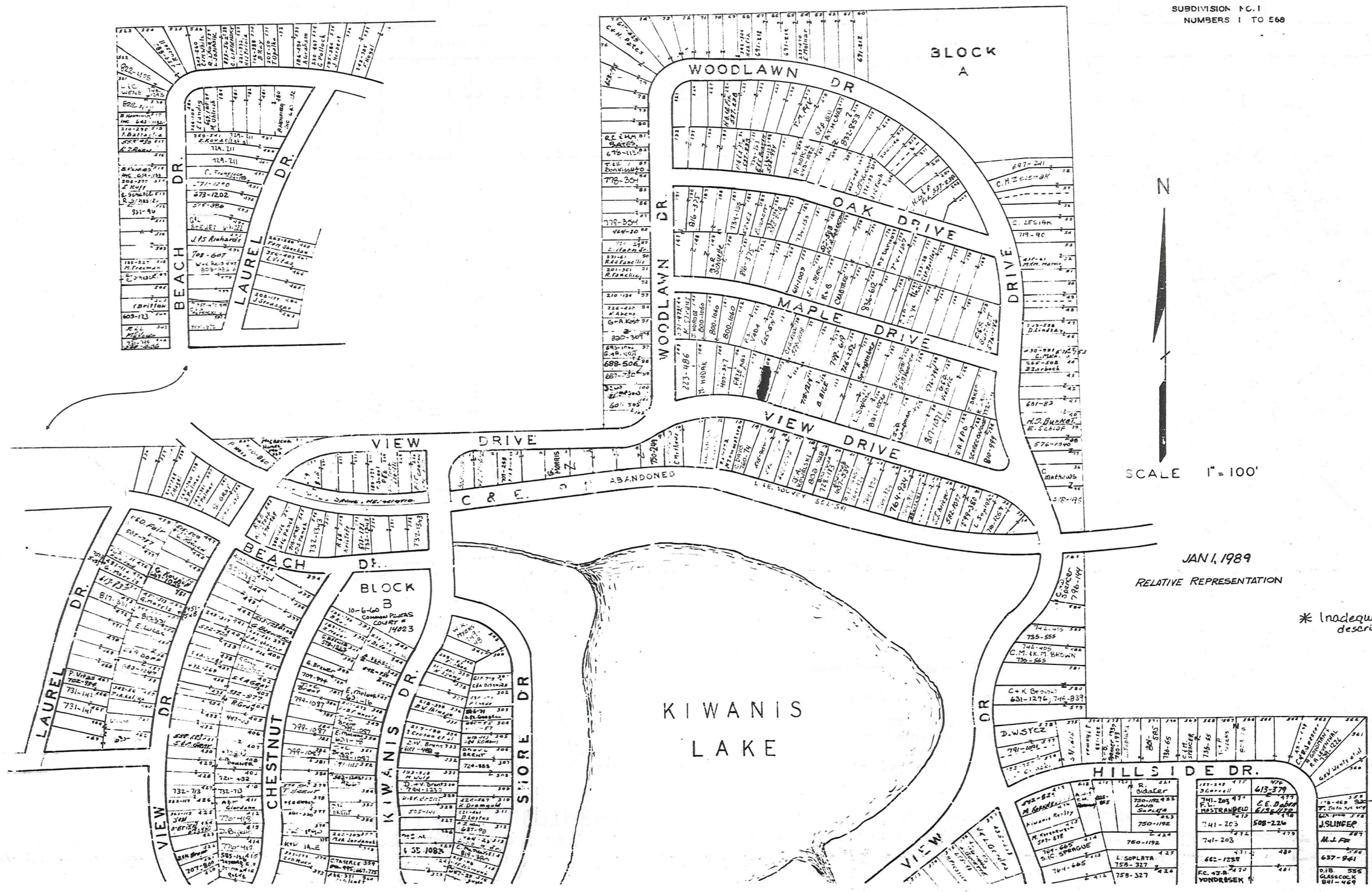
12-S
365

KIWANIS LAKE SUB.

VOL. I-PGS. 44 TO 49 PLATS

NEWBURY TWP. LOT 24 TR. 1 & LOTS 3 & 4 TR. 2

SUBDIVISION NO. 1
NUMBERS 1 TO 566



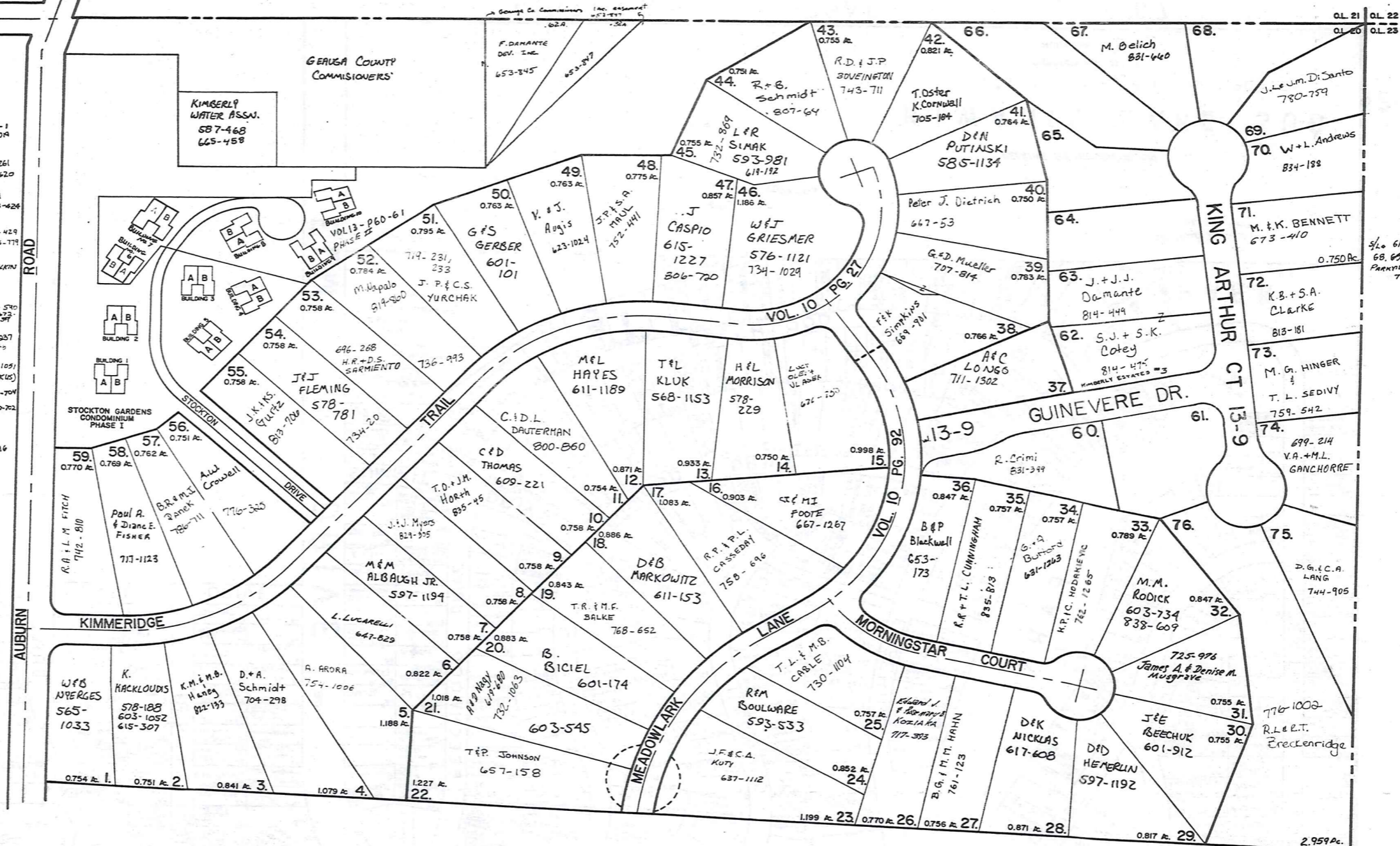
SCALE 1" = 100'

JAN 1, 1989
RELATIVE REPRESENTATION

* Inadequate description

12-T-1

- BUILDING 1
A-M SEDIVY 816-1
B-B MEYER 633-104
- BUILDING 2
A-C BAYLEY 840-1261
B-P FEEDERICK 647-620
- BUILDING 3
C-THORNTON WYSTANWICKI
B-W-S VINCENT 643-426
- BUILDING 4
A-L-E LUKINS 760-429
B-H-W VANDERDALE 746-779
- BUILDING 5
687-52 A-B-M DECARLO + D-C FELKIN
B-JAMES J SORIANO 716-890
- BUILDING 6
A-B-C DEHRENDT 755-570
B-RE-F-N-R PIETRON 737-737
- BUILDING 7
A-S SINGLETON 801-227
B-P-R-O-N-D 697-750
- BUILDING 8
A-H-W RADER 759-1051
B-C-M-S-SCHIRANTZ (P&K) 834-750
- BUILDING 9
A-M-P ROBERTS 643-704
B-JOHN WENZ 667-722
- BUILDING 10
745-1210 A-H-M-MOWEN
B-B-COVRT 752-646



scale 1"=100'

JAN. 1, 1989

RELATIVE REPRESENTATION

* Inadequate description

KIMBERLY ESTATES



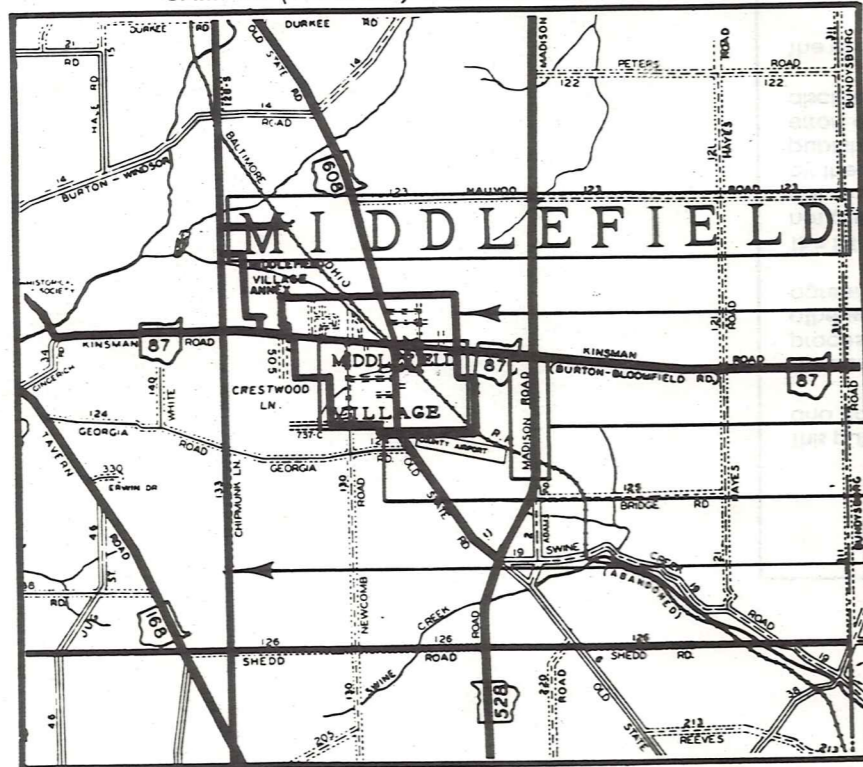
Lot No.	Owner Name	Vol.	Page	Lot No.	Owner Name	Vol.	Page
38	J. E. P. Hill	548	151	117	S.L. HORVATH	374	557
39	Carl L. Seil	218	186	118	"	237	718
40	ERNA J. KUNSER	937	1219	119	"	"	"
41	"	431	866	120	S. J. Downs	568	475
42	"	713	1068	121	E. D. Bushek	733	1140
43	E. W. DELINAK	672	876	122	E. D. Bushek 557-577	"	"
44	E. Scherpf	512	539	123	W. L. FURGER	830	919
45	"	604	406	124	"	237	"
46	L. Krofta	609	404	125	"	208	"
47	Arthur Jancor	218	512	126	"	237	"
48	Richard B. Minichbauer	221	381	127	F. J. K. VERCELLOTTI	770	922
49	K. E. ARCHIBALD	119	600	128	"	242	"
50	D. B. & M. J. PORTMAN	706	472	129	"	243	"
51	G. T. Banto	729	999	130	W. B. KAUFMAN	703	1146
52	"	"	"	131	"	244	"
53	"	"	"	132	"	245	"
54	SIA GEBET	623	76	133	"	246	"
55	A. J. BONNISI & C. GILBERT	770	248	134	"	247	"
56	"	"	"	135	W. L. FURGER	870	916
57	"	"	"	136	E. D. Bushek 557-577	733	1140
58	"	"	"	137	Ernest T. Wichert	225	553
59	A. J. BONNISI	773	205	138	"	251	"
60	D. B. & M. J. PORTMAN	706	472	139	S. J. Downs	568	475
61	R. B. & J. ROBERTS	765	385	140	Herbert A. "	362	503
62	"	558	600	141	"	259	"
63	"	"	"	142	J. P. Morton	574	308
64	"	"	"	143	"	258	"
65	"	"	"	144	"	257	"
66	J. J. L. KOCHOFF	197	779	145	"	258	"
67	"	"	"	146	"	259	"
68	"	"	"	147	J. P. J. MORTON	746	269
69	"	"	"	148	Edwin A. Schultz	233	309
70	"	"	"	149	"	262	"
71	"	"	"	150	"	263	"
72	"	"	"	151	A. George	550	718
73	J. R. Bannici	612	542	152	"	265	"
74	G. P. SANC	729	999	153	M. V. HAVENSTEIN	282	350
75	J. R. C. MASACCHIO	732	699	154	"	267	"
76	"	"	"	155	RAY PARKIN	912	142
77	G. F. WELLE	667	1206	156	"	269	"
78	Margit Masrie	556	895	157	E. M. Hrabak	730	1066
79	"	"	"	158	"	271	"
80	"	"	"	159	Kent R. Ror	429	912
81	"	"	"	160	Kent Ror	429	912
82	"	"	"	161	R. C. & D. SHAW	715	775
83	"	"	"	162	"	275	"
84	R. M. ROWLANDS	637	760	163	J. C. M. EDWARDS	715	1263
85	"	"	"	164	R. C. & D. SHAW	715	775

Lot No.	Owner Name	Vol.	Page	Lot No.	Owner Name	Vol.	Page
86	L. E. & K. E. LEGEN	783	103	199	D. M. LAMBERT	799	1016
87	"	"	"	200	H. HEJOUR	305	105
88	"	"	"	201	"	"	"
89	L. E. & K. E. LASICH	781	315	202	"	"	"
90	J. Ringelmayr	703	204	203	"	"	"
91	"	"	"	204	EN COLLINS	667	68
92	"	"	"	205	"	"	"
93	ANGELA George	331	359	206	"	"	"
94	ANGELA George	550	718	207	"	"	"
95	"	"	"	208	R. F. Ogitt	785	1025
96	"	"	"	209	"	"	"
97	"	"	"	210	"	"	"
98	"	"	"	211	"	"	"
99	"	"	"	212	"	"	"
100	"	"	"	213	N. COLLINS	605	719
101	"	"	"	214	J. Schroeder	653	735
102	"	"	"	215	J. SCHROEDER	"	"
103	"	"	"	216	"	"	"
104	"	"	"	217	L. & B. SANTILLO	645	226
105	"	"	"	218	Frederic Meidun	255	281
106	"	"	"	219	E. M. BADWISER	677	16
107	"	"	"	220	W. K. Petersen	815	73
108	R. L. MURPHY	909	1252	221	"	"	"
109	"	"	"	222	M. DERER	167	202
110	"	"	"	223	MINNBY (SEE 108)	"	"
111	C. G. H. Kriuse	491	724	224	W. L. LAMBERT	60	344
112	"	"	"	225	CHRISTIANE GENSERT	709	192
113	PUNDERSON LAKE ALL ASS.	733	690	226	"	"	"
114	A. J. & P. SATANIK	731	255	227	Ref. Ror - D. L. Ror	749	138
115	"	"	"	228	"	"	"
116	"	"	"	229	"	"	"
117	S. L. HORVATH	374	557	230	J. C. GRATTINO	785	599
118	"	237	718	231	" 835-549	835	549
119	"	"	"	232	"	794	467
120	S. J. Downs	568	475	233	K. R. GLAESSEL	728	653
121	E. D. Bushek	733	1140	234	EVELYN E. CROSS	728	670
122	E. D. Bushek 557-577	"	"	235	D. JROUSEK	848	29
123	W. L. FURGER	830	919	236	" 240-29	848	29
124	"	"	"	237	B. KAUFMAN	440	458
125	"	"	"	238	B. KAUFMAN	285	440
126	"	"	"	239	"	237	180
127	F. J. K. VERCELLOTTI	770	922	240	"	500	"
128	"	"	"	241	B. KAUFMAN	535	1402
129	"	"	"	242	S. C. Kershaw, Sr.	700	101
130	W. B. KAUFMAN	703	1146	243	GEORGE HOBUECH	605	69468
131	"	"	"	244	"	605	69468
132	"	"	"	245	"	"	"
133	"	"	"	246	EVELYN E. CROSS	728	670
134	"	"	"	247	"	"	"
135	W. L. FURGER	870	916	248	Y. Dego J. NAWKE C. Dego	720	760
136	E. D. Bushek 557-577	733	1140	249	"	"	"
137	Ernest T. Wichert	225	553	250	"	"	"
138	"	"	"	251	C. E. ENGBART, JR.	728	62
139	S. J. Downs	568	475	252	"	728	62
140	Herbert A. "	362	503	253	F. N. STEIN II.	701	353
141	"	"	"	254	"	653	442
142	J. P. Morton	574	308	255	E. F. BAISSER	"	"
143	"	"	"	256	"	"	"
144	"	"	"	257	"	"	"
145	"	"	"	258	"	"	"
146	"	"	"	259	"	"	"
147	J. P. J. MORTON	746	269	260	S. J. BUKOWSKI 700-782	237	258
148	Edwin A. Schultz	233	309	261	J. E. BUKOWSKI	210	120
149	"	262	"	262	C. A. RICHTER	597	257
150	"	263	"	263	"	"	"
151	A. George	550	718	264	"	"	"
152	"	265	"	265	E. J. M. O'NEILL	723	1229
153	M. V. HAVENSTEIN	282	350	266	"	"	"
154	"	267	"	267	"	"	"
155	RAY PARKIN	912	142	268	S. Mallett	617	344
156	"	269	"	269	S. Mallett	617	344
157	E. M. Hrabak	730	1066	270	M. Fritz	815	654
158	"	271	"	271	"	610	29
159	Kent Ror	429	912	272	Charles Meller	620	29
160	Kent Ror	429	912	273	Charles Meller	620	29
161	R. C. & D. SHAW	715	775	274	Charles Meller	620	29
162	"	275	"	275	S. E. MOENKHAUS	823	1046
163	J. C. M. EDWARDS	715	1263	276	"	823	1046
164	R. C. & D. SHAW	715	775	277	E. A. GEBER	761	1278
165	"	278	"	278	Z. TOTHWEG	458	1221
166	D. C. M. LINKINS	773	1263	279	"	268	353
167	L. CZERR	800	1261	280	G. F. Wood	362	122
168	"	281	"	281	"	620	29
169	"	282	"	282	Charles Meller	620	29
170	"	283	"	283	M. Fritz	815	654
171	R. Martell	480	696	284	"	"	"
172	"	285	"	285	Sam J. Mullett	587	357
173	J. PLAVCAN	607	63	286	S. MERSHAW	556	142
174	"	287	"	287	"	"	"
175	J. BARNES HOSA	728	712	288	"	"	"
176	"	289	"	289	S. KERRAHAN	237	205
177	"	290	"	290	D. C. M. EDWARDS	723	283
178	R. H. WEDLER	741	21	291	" 1/2 of 170	"	"
179	"	292	"	292	"	"	"
180	C. R. C. HOPSTATTER JR.	687	520	293	M. ENVOLOSYN	667	32
181	"	294	"	294	"	"	"
182	J. J. Vaccarino	378	296	295	"	"	"
183	"	296	"	296	"	"	"
184	W. KAZER	576	846	297	"	"	"
185	R. H. VIMR et al 599-641	505	901	298	"	"	"
186	J. P. HANSEN 15, 16, 17, 18, 19, 20, 21, 22, 23, 24, 25, 26, 27, 28, 29, 30, 31, 32, 33, 34, 35, 36, 37, 38, 39, 40, 41, 42, 43, 44, 45, 46, 47, 48, 49, 50, 51, 52, 53, 54, 55, 56, 57, 58, 59, 60, 61, 62, 63, 64, 65, 66, 67, 68, 69, 70, 71, 72, 73, 74, 75, 76, 77, 78, 79, 80, 81, 82, 83, 84, 85, 86, 87, 88, 89, 90, 91, 92, 93, 94, 95, 96, 97, 98, 99, 100, 101, 102, 103, 104, 105, 106, 107, 108, 109, 110, 111, 112, 113, 114, 115, 116, 117, 118, 119, 120, 121, 122, 123, 124, 125, 126, 127, 128, 129, 130, 131, 132, 133, 134, 135, 136, 137, 138, 139, 140, 141, 142, 143, 144, 145, 146, 147, 148, 149, 150, 151, 152, 153, 154, 155, 156, 157, 158, 159, 160, 161, 162, 163, 164, 165, 166, 167, 168, 169, 170, 171, 172, 173, 174, 175, 176, 177, 178, 179, 180, 181, 182, 183, 184, 185, 186, 187, 188, 189, 190, 191, 192, 193, 194, 195, 196, 197, 198, 199, 200, 201, 202, 203, 204, 205, 206, 207, 208, 209, 210, 211, 212, 213, 214, 215, 216, 217, 218, 219, 220, 221, 222, 223, 224, 225, 226, 227, 228, 229, 230, 231, 232, 233, 234, 235, 236, 237, 238, 239, 240, 241, 242, 243, 244, 245, 246, 247, 248, 249, 250, 251, 252, 253, 254, 255, 256, 257, 258, 259, 260, 261, 262, 263, 264, 265, 266, 267, 268, 269, 270, 271, 272, 273, 274, 275, 276, 277, 278, 279, 280, 281, 282, 283, 284, 285, 286, 287, 288, 289, 290, 291, 292, 293, 294, 295, 296, 297, 298, 299, 300, 301, 302, 303, 304, 305, 306, 307, 308, 309, 310, 311, 312, 313, 314, 315, 316, 317, 318, 319, 320, 321, 322, 323, 324, 325, 326, 327, 328, 329, 330, 331, 332, 333, 334, 335, 336, 337, 338, 339, 340, 341, 342, 343, 344, 345, 346, 347, 348, 349, 350, 351, 352, 353, 354, 355, 356, 357, 358, 359, 360, 361, 362, 363, 364, 365, 366, 367, 368, 369, 370, 371, 372, 373, 374, 375, 376, 377, 378, 379, 380, 381, 382, 383, 384, 385, 386, 387, 388, 389, 390, 391, 392, 393, 394, 395, 396, 397, 398, 399, 400, 401, 402, 403, 404, 405, 406, 407, 408, 409, 410, 411, 412, 413, 414, 415, 416, 417, 418, 419, 420, 421, 422, 423, 424, 425, 426, 427, 428, 429, 430, 431, 432, 433, 434, 435, 436, 437, 438, 439, 440, 441, 442, 443, 444, 445, 446, 447, 448, 449, 450, 451, 452, 453, 454, 455, 456, 457, 458, 459, 460, 461, 462, 463, 464, 465, 466, 467, 468, 469, 470, 471, 472, 473, 474, 475, 476, 477, 478, 479, 480, 481, 482, 483, 484, 485, 486, 487, 488, 489, 490, 491, 492, 493, 494, 495, 496, 497, 498, 499, 500, 501, 502, 503, 504, 505, 506, 507, 508, 509, 510, 511, 512, 513, 514, 515, 516, 517, 518, 519, 520, 521, 522, 523, 524, 525, 526, 527, 528, 529, 530, 531, 532, 533, 534, 535, 536,						

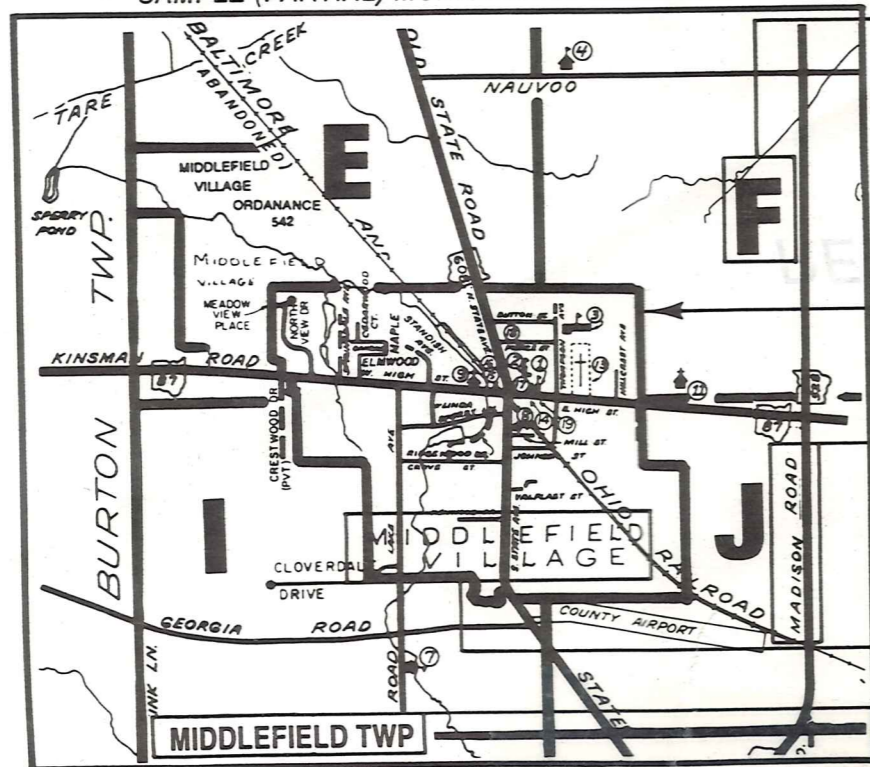
Explanation and Use Sheet for Geauga County, Ohio

A

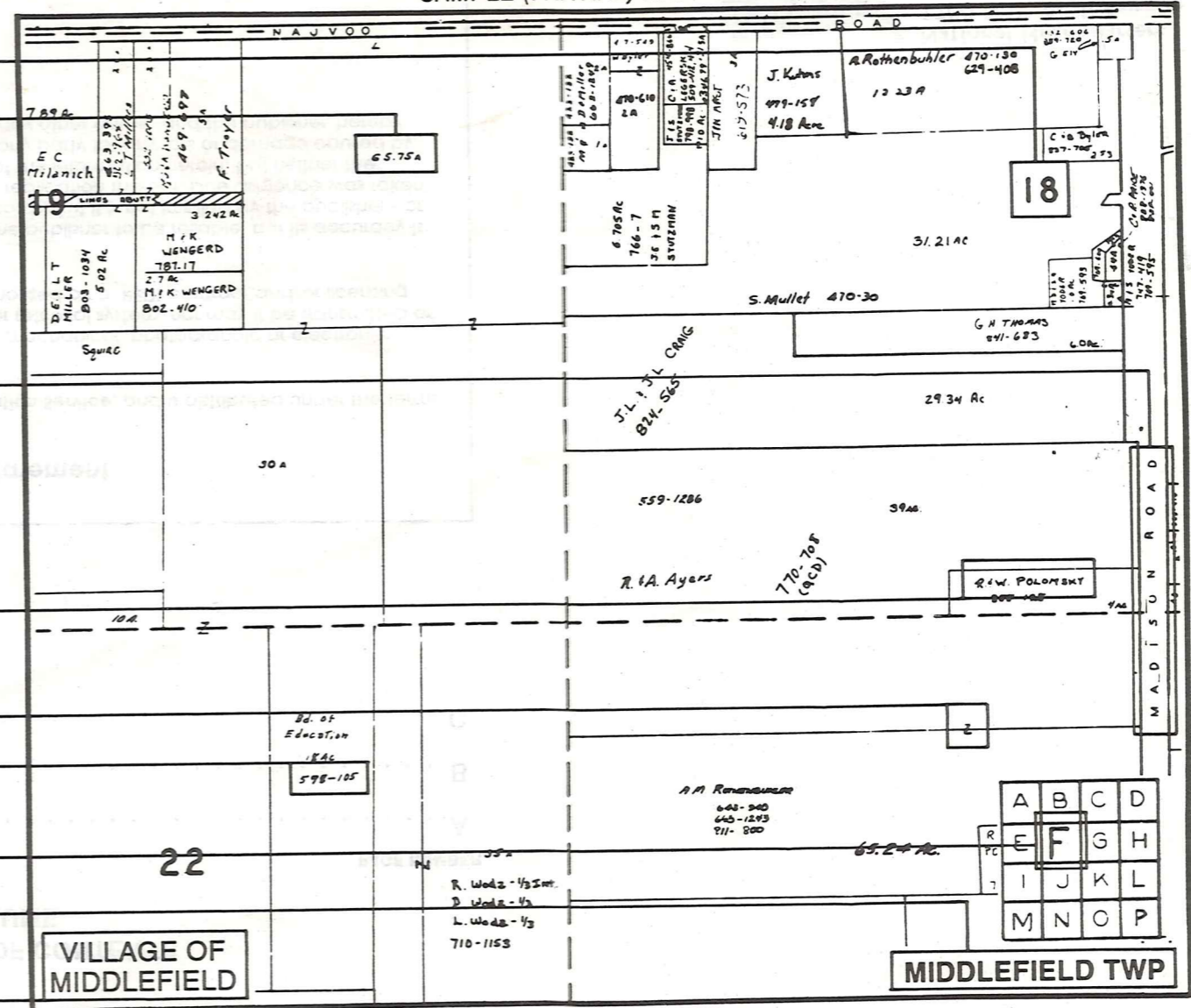
SAMPLE (PARTIAL) COUNTY INDEX MAP



SAMPLE (PARTIAL) MUNICIPALITY INDEX MAP



SAMPLE (PARTIAL) MAP PAGE



- Tract Lot Number
- Acreage
- Township Name
- Village Boundary
- Street Name
- Village Name
- Township Boundary
- Owners Name
- Denotes Continuous Ownership
- Deed Book & Page
- Map Page Number
- Township Name
- Village Name

- Village Boundary
- Street Name
- Village Name
- Township Name

USE OF THE MAP VOLUME

1. LOCATE THE GENERAL AREA OF INTEREST ON THE COUNTY INDEX MAP AND NOTE THE MUNICIPALITY NAME (TOWNSHIP OR VILLAGE).
 2. REFER TO THE TABLE OF CONTENTS AND NOTE THE BEGINNING ATLAS PAGE NUMBER FOR THE MUNICIPALITY OF INTEREST.
 3. TURN TO THE PAGE INDICATED, ON THIS PAGE WILL APPEAR AN INDEX MAP FOR THAT MUNICIPALITY.
 4. LOCATE THE GENERAL AREA OF INTEREST AND NOTE THE MAP PAGE NUMBER. THIS MAY BE EITHER A LETTER OR A NUMBER.
 5. MAP PAGES ARE IN ALPHABETICAL (OR NUMERICAL) SEQUENCE FOLLOWING THE MUNICIPALITY INDEX MAP. FOLLOW SEQUENCE TO THE MAP PAGE INDICATED.
 6. LOCATE SPECIFIC PARCEL OF INTEREST AND NOTE THE DESIRED INFORMATION.
- NOTE: ON SOME MAPS YOU MAY BE REFERRED TO A DETAIL SHEET SHOWING AN ENLARGEMENT OF THE AREA. THESE MAPS ARE FOUND AT THE END OF THE REGULAR MAP PAGES IN EACH MUNICIPALITY IN EITHER ALPHABETICAL OR NUMERICAL SEQUENCE.
- NOTE: CHARDON VILLAGE HAS TITLE SHEETS. TO LOCATE OWNERS NAME, NOTE THE PARCEL NUMBER, REFER TO THE TITLE PAGE FOLLOWING THE MAP OF INTEREST, FOLLOW NUMERICAL SEQUENCE TO THE PARCEL NUMBER OF INTEREST AND NOTE THE DESIRED INFORMATION. IN ALL OTHER MUNICIPALITIES THE OWNERS NAME APPEARS ON THE MAP PAGE.